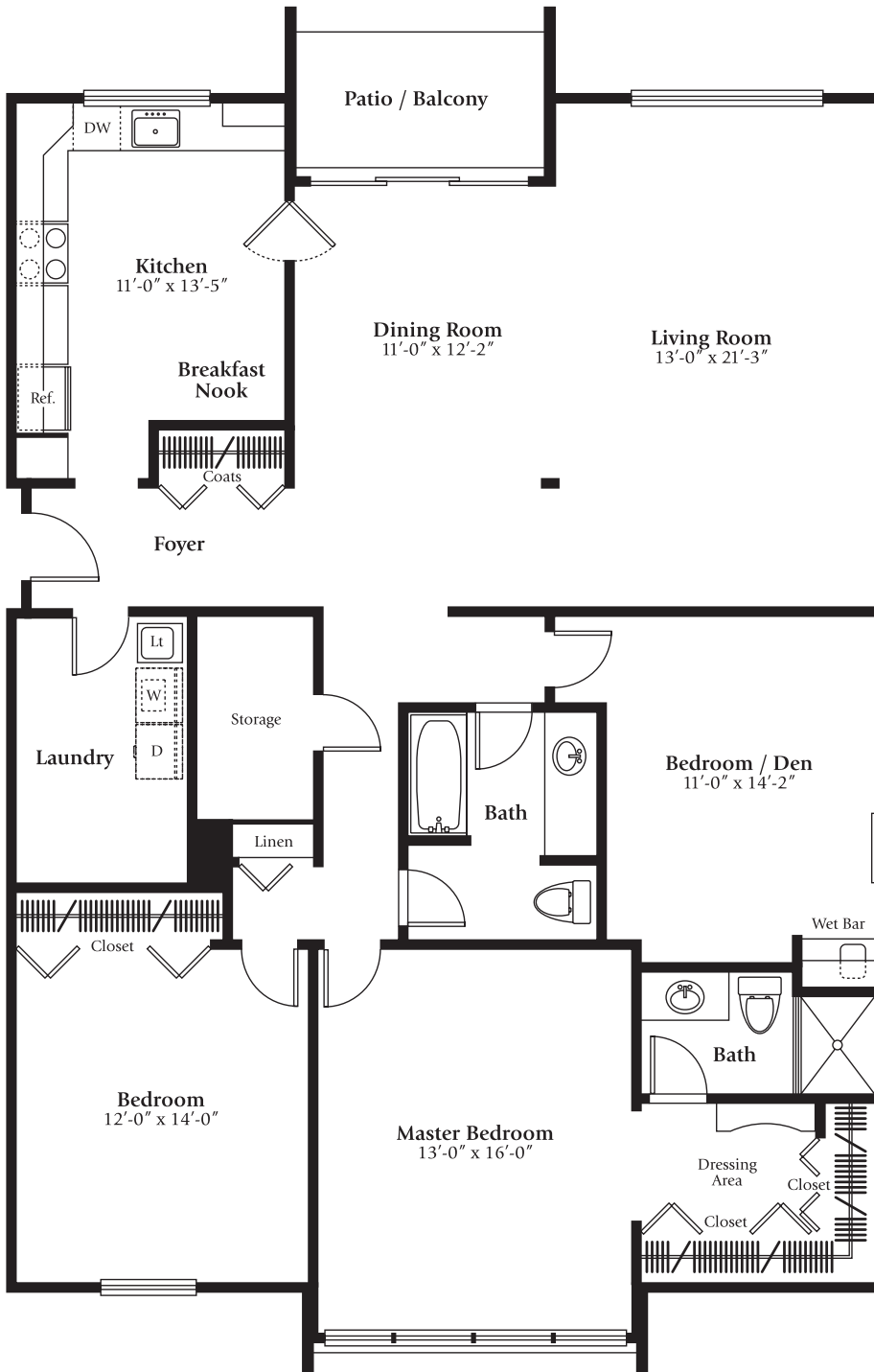




PRINT

THE PINNACLE — 3 Bedroom, 2 Bath



- Refreshing outdoor living space – a patio and easy entry for first floor homes, and a balcony for upper level homes.
- Generous storage and ample closet space mean a place for everything, and everything in its place.
- Large living room connects to the dining room and kitchen – makes family interaction and lively entertaining simple.
- Master Suite offers a large closet and dressing area, with a private bath for added luxury and comfort.
- Large kitchen counter space and a handy breakfast nook make cooking and cleaning while entertaining a breeze.
- Convenient laundry room allows for multitasking right in your home – leaving you with more free time.
- Three bedrooms to accommodate your family, or turn into a den or office for additional space.

OFFICE: 22560 Saratoga Drive
Southfield,
Michigan 48075

PHONE: 248-424-2121





Legacy Place's unmistakable substance and warmth provide the perfect ambiance for carefree condominium living.

Inviting Spaces

- Generous 2, 3 and Townhome floor plans with ample closet and storage space
- Formal foyer with guest closet
- Private balconies and terraces overlooking lush landscaping

Elegant Suites

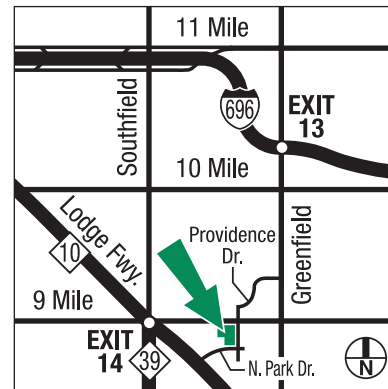
- Owner's suites feature a wall of windows for maximum natural light
- Generous closet space that includes dressing area
- Full private bath

Modern Convenience

- Individually controlled heat and air conditioning
- Washer/Dryer Connection
- Reserved garage parking, plus additional outside parking

Area and Community Amenities

- Sparkling swimming pool with sundeck and well-appointed clubhouse
- Landscaped courtyards
- Close proximity to the area's finest shopping, recreation, business and easy access to the Southfield, Lodge and I-696 expressways



OFFICE: 22560 Saratoga Drive
Southfield,
Michigan 48075

PHONE: 248-424-2121