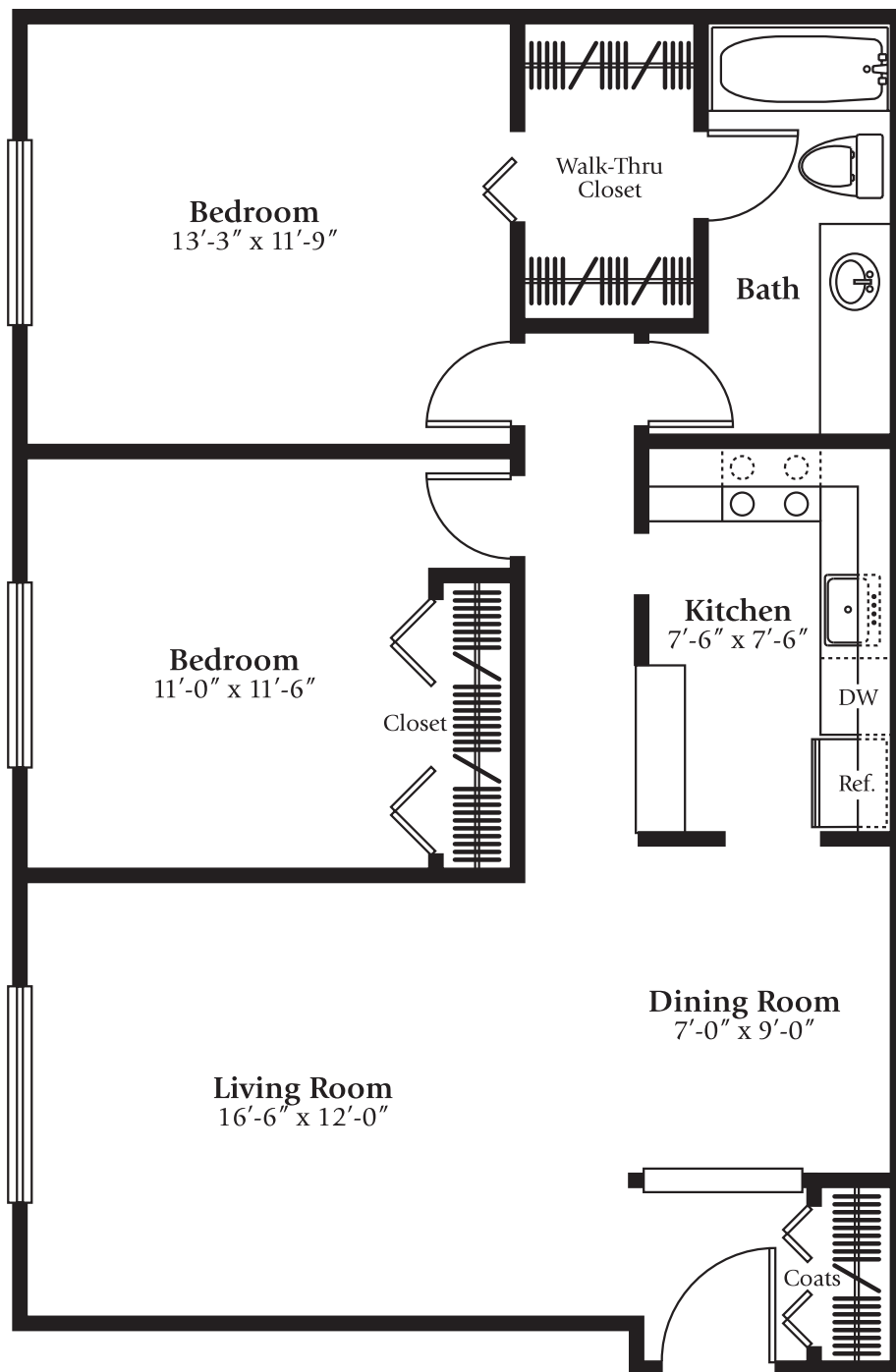


# PLYMOUTH MANOR

PRINT

## THE BRADFORD — 2 Bedroom, 1 Bath



- The Master Suite's large, walk-in closet opens into a full bath – for perfect prep every day of the week.
- Inviting ambiance of the living room flows into the dining area and kitchen, making entertaining and communication simple through the fabulous open layout.
- Deluxe kitchen appliances including an oven/range, dishwasher, refrigerator and garbage disposal make cooking and cleaning a breeze, adding up to more time to yourself.
- Welcoming entryway with a coat closet gives guests a place to tuck away their belongings, and you a place to store your seasonal gear.

OFFICE: 9126 Lilley Road  
Plymouth,  
Michigan 48170

PHONE: 734-455-3880

# PLYMOUTH MANOR

Plymouth Manor's sizable grounds and skillful landscaping gives the residents of this community the sensation of having the best of both worlds—the tranquility and ease of a country setting with nearby urban convenience and excitement.

## Generous Spaces

- Extra large living areas with gracious private foyers and ample cabinets and vanities
- Huge master bedroom suites with roomy walk-in closets and a full bath in two-bedroom plans
- Abundant closet space, convenient in-unit storage and available basement storage

## Comfortable Contentment

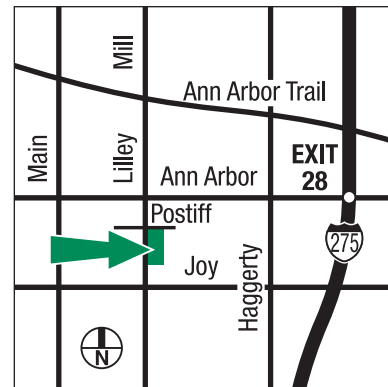
- Deluxe appliances, including oven/range, refrigerator, dishwasher, microwave and disposal

## Energy Smart

- Heat included
- Individually controlled heat and air conditioning

## Inviting Neighborhood

- Intercom entry system
- Community swimming pool
- Beautifully landscaped grounds
- Well-lighted parking
- Minutes from charming downtown Plymouth, vibrant Canton, excellent shopping and the best of Metro Detroit via nearby I-275, M-14 and I-96



OFFICE: 9126 Lilley Road  
Plymouth,  
Michigan 48170

PHONE: 734-455-3880